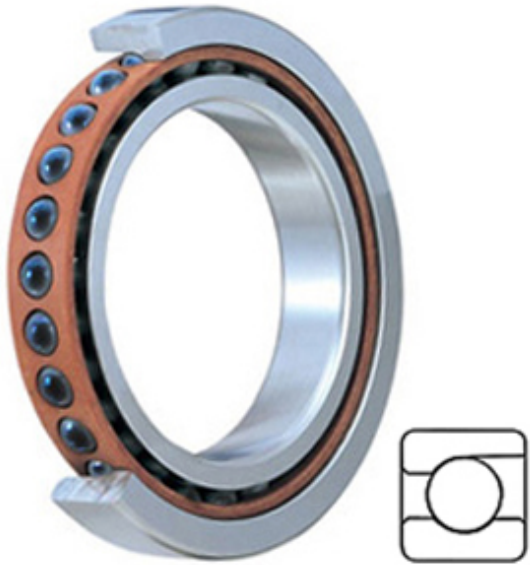




# NTN BEARING DRIVESHAFT, INC.



2MMC9100WI SUM Bearing 2D drawings and 3D CAD models

## TIMKEN 2MMC9100WI SUM Miniature Precision Ball Bearings

Bearing No. 2MMC9100WI SUM

Category	Miniature Precision Ball Bearings
Inventory	0.0
Manufacturer Name	TIMKEN
Minimum Buy Quantity	N/A
Weight	0.018
EAN	0087796256156
Product Group	B04270
Enclosure	Open
Precision Class	ABEC 7   ISO P4
Flanges	No
Material - Ball	Ceramic
Race Material	Steel
Raceway Style	1 Rib Outer Ring
Number of Bearings	1 (Single)
Contact Angle	15 Degree
Preload	Medium
Cage Material	Phenolic
Rolling Element	Ball Bearing
Mounting Arrangement	Universal
Flush Ground	Yes
Inch - Metric	Metric
Other Features	Single Row   Angular Contact   Super High Precision   Hybrid   Corrosion Resistant Ball
Long Description	10MM Bore; 26MM



## NTN BEARING DRIVESHAFT,INC.

	Outside Diameter; 8MM Inner Race Width; 8MM Outer Race Width; Open Enclosure; ABEC 7   ISO P4 Precision; No Flange; Ceramic Ball Material; Steel Race Material; 1 (Single) Bearing
Category	Miniature Precision Ball Bearings
UNSPSC	31171531
Harmonized Tariff Code	8482.10.50.28
Noun	Bearing
Keyword String	Angular Contact Ball
Manufacturer URL	<a href="http://www.timken.com">http://www.timken.com</a>
Manufacturer Item Number	2MMC9100WI SUM
Weight / LBS	0.04
d	0.394 Inch   10 Millimeter
D	1.024 Inch   26 Millimeter
Outer Race Width	0.315 Inch   8 Millimeter
Flange Outside Diameter	0 Inch   0 Millimeter
Inner Race Width	0.315 Inch   8 Millimeter