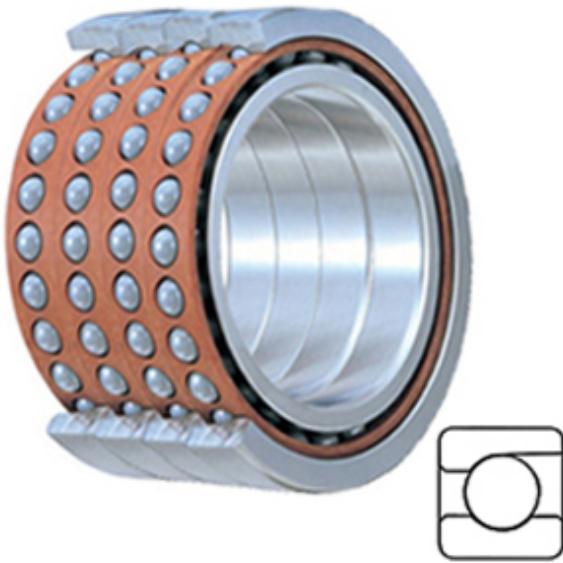




NTN BEARING DRIVESHAFT, INC.

TIMKEN 2MM9100WI QUH Miniature Precision Ball Bearings

Bearing No. 2MM9100WI QUH



2MM9100WI QUH Bearing 2D drawings and 3D CAD models

Category	Miniature Precision Ball Bearings
Inventory	0.0
Manufacturer Name	TIMKEN
Minimum Buy Quantity	N/A
Weight	0.073
EAN	0087796325081
Product Group	B04270
Enclosure	Open
Precision Class	ABEC 7 ISO P4
Flanges	No
Material - Ball	Steel
Race Material	Steel
Raceway Style	1 Rib Outer Ring
Number of Bearings	4 (1 Quadruplex Set)
Contact Angle	15 Degree
Preload	Heavy
Cage Material	Phenolic
Rolling Element	Ball Bearing
Mounting Arrangement	Quadruplex-Universal
Flush Ground	Yes
Inch - Metric	Metric
Other Features	Single Row Angular Contact Super High Precision
Long Description	10MM Bore; 26MM Outside Diameter; 8MM



NTN BEARING DRIVESHAFT,INC.

	Inner Race Width; 8MM Outer Race Width; Open Enclosure; ABEC 7 ISO P4 Precision; No Flange; Steel Ball Material; Steel Race Material; 4 (1 Quadruplex Set) Beari
Category	Miniature Precision Ball Bearings
UNSPSC	31171531
Harmonized Tariff Code	8482.10.50.28
Noun	Bearing
Keyword String	Angular Contact Ball
Manufacturer URL	http://www.timken.com
Manufacturer Item Number	2MM9100WI QUH
Weight / LBS	0.16
d	0.394 Inch 10 Millimeter
Inner Race Width	0.315 Inch 8 Millimeter
D	1.024 Inch 26 Millimeter
Flange Outside Diameter	0 Inch 0 Millimeter
Outer Race Width	0.315 Inch 8 Millimeter